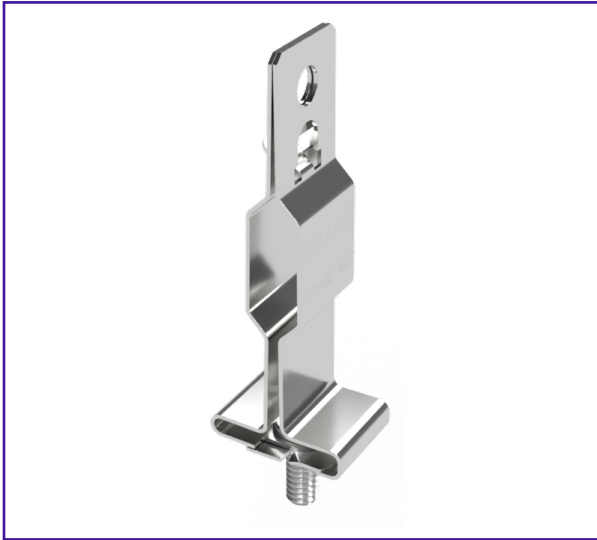


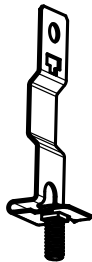
# HTB-WA-1420

# HARDWARE T-BAR CLIPS

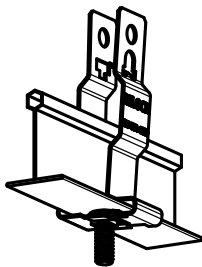


Wrap around style ceiling grid T-bar clip for 9/16" or 15/16" standard T-grid. 1/4-20" bolt. Wraps around grid to allow support to structural support above grid.

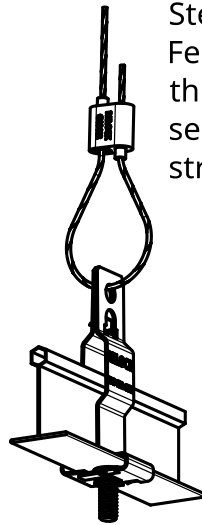
### INSTALLATION INSTRUCTIONS:



Step 1:  
Insert 1/4-20 bolt into half with square hole.



Step 2:  
Slide half w/ bolt onto T-grid. Take other half and snap two halves together.



Step 3:  
Feed cable or tie wire through top hole and secure other end to structure above.

### SUBMITTAL INFORMATION:

#### MATERIAL & SPECIFICATION

- Cold rolled spring steel
- Finish: Zinc
- Working load limit 60lbs
- Screw size 1/4-20 0.56" thread length

**T-GRID SIZES:** 9/16" or 15/16" standard T-grid

**NOT** suitable for indoor pools or other chlorinated environments.

