

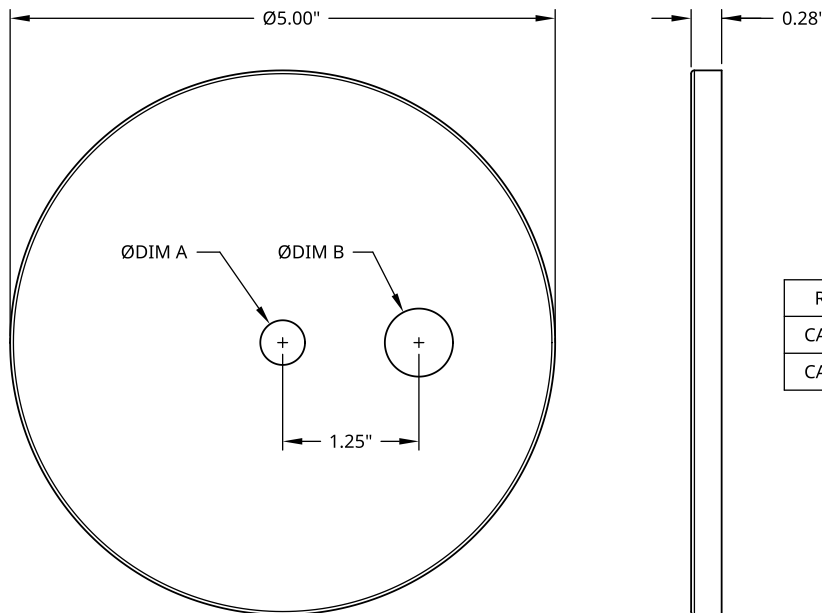
**CAN-5-XX-XX-U**

**Ø5" POWERFEED CANOPIES**



Unfinished Ø5" power feed ceiling canopy covers for cable suspension systems. Use to cover standard junction boxes. Center hole for suspension cables and offset hole for power cord. Not finished to allow for custom painting. For architectural lighting systems.

**DIMENSIONS:**



RELOCK P/N	DIM A	DIM B
CAN-5-41-63-U	0.41"	0.625"
CAN-5-41-88-U	0.41"	0.875"

**SUBMITTAL INFORMATION:**

**CANOPIE MATERIAL & SPECIFICATION**

- 22 Gauge cold rolled steel
- Finish: None
- Color: Silver

Note: Steel will be unfinished so some surface rust may be present. Remove any surface rust before finishing or powder coating.

**NOT** suitable for indoor pools or other chlorinated environments.